

PRO 3 S



System Specifications

Depth Rating	152 m (500 ft)
Total System Weight	43 kgs (95 lbs) in 2 watertight Pelican cases
Submersible Size and Weight	3.8 kgs (8.4 lbs) / 12, 9, 8.5 inches (30.5, 23, 21 cm)
Speed	2.6 knots
Power Supply	100-240 VAC

Submersible Robot

Main Camera

Location:	Front - inside the pressure hull
Features:	Forward facing wide angle color camera.
Zoom:	N/A
Resolution:	570 lines of resolution
Sensitivity:	0.3 lux
Focus:	Wide Focus Range
Type:	Specify NTSC or PAL
View Angle:	90° horizontal 140° diagonal <i>underwater optimized wide angle</i>
Tilt:	Variable tilt with 180° vertical field of view

Second Camera

Rear facing high resolution black & white 430 lines of resolution / 0.1 lux



160° Vertical Tilt, Manual Focus Hi-Res Camera

Lighting

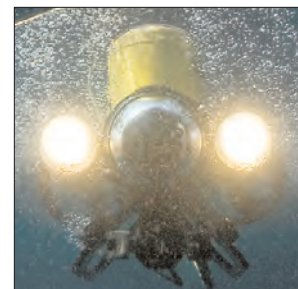
Forward

Type:	2 X 20w Halogen Lamps
Control:	Variable Intensity

Second Camera - Rear

Type:	Ultra high intensity LED array
-------	--------------------------------

External Auxiliary - Optional



Variable Intensity Halogen Lighting

Propulsion

Horizontal

Drive:	Gearred
Motor:	Brushed
Propellers:	60 mm
Thrusters:	Two

Vertical

Drive:	Gearred
Motor:	Brushed
Propeller:	45 mm
Thruster:	One

On-Board Sensors

Navigation: Compass (heading read out on control panel LCD)-option to overlay heading on monitor
 Depth: Reading in feet or meters on control panel LCD - option to overlay depth on video monitor

Accessories and Sensors

9 pin accessory connector allows easy field integration of various instruments, sonar, and sensors

Control Console

Comms Protocol:	RS-485 (if using with PC)
Case:	Watertight Pelican1550
Computer:	Optional
Display:	Requires User Supplied Monitor
Video out:	Analog composite video out
Recording:	Optional Digital Recording Package (Not Included)
Video Overlay:	Option to superimpose date, time, depth, and heading information on monitor
Audio Annotation:	Optional

- Controls:
- ◆ Integrated Joystick for horizontal movement
 - ◆ 3rd Axis joystick control (selectable for depth, camera tilt, lights, and manipulator)
 - ◆ Vertical depth control with Auto Depth Feature
 - ◆ Lighting, Camera Tilt, Focus Control, and manipulator control (manipulator not included)
 - ◆ PC Pilot enabled (requires PC and XE package, not included)
 - ◆ Front and Rear Camera toggle



Rear Camera, LED Array, Accessory Port

Tether

Type:	Neutrally Buoyant Standard Tether
Length:	76 m (250 ft)
Extension:	Available - Not Included
Management:	Tether Deployment System (TDS)
Voltage:	48 volts DC - Maximum tether voltage

Expansion:	Modular
Breaking Strength:	1,000 lbs



Simple Controls - Requires User Monitor

Other Components

- ◆ Owners Manual
- ◆ Brass Ballast Weight Set
- ◆ Basic Tool Kit
- ◆ Hand Compass
- ◆ Tether Strain Relief
- ◆ System fits in two watertight Pelican cases - airline checkable

XE Package Optional

Warranty

Two year limited warranty covering manufacturing and component defects. Upon or after warranty expiration this warranty can be renewed annually.



152m (500 ft) Depth Rated Pro 3 S With Tether Deployment System