

Kirby Morgan® 28 Band Mask®

P/N 500-028 / 500-029



Location #	Part #	Description
1	510-509	Head Harness (Spider)
2	510-712	KMB Hood Assembly
3	510-505	Face Seal
4	510-575	Nose Block Pad
5	545-015	Nose Block Device
6	510-747	Oral Nasal Mask
7*	550-081	Regulator Mount Nut
	550-038	Regulator Mount Nut (pre '05)
8*	510-490	O-ring
	510-211	O-ring (pre '05)
9	510-550	Valve, Oral Nasal
10	520-020	Valve Body
11	530-097	Screw
12	545-007	Top Band
13	545-009	Bottom Band
14*	520-125	KMB 28 Frame 1" Hole
	520-096	KMB 28 Frame 7/8" Hole (pre '05)
15	545-066	Standoff
16	530-415	Washer
17	545-016	Air Train
18	530-317	Nut
19	530-535	Washer
20	530-317	Nut
21	530-535	Washer
22	530-050	Screw
23	530-062	Screw
24	540-182	Bottom BandKeeper® Mount
25	540-175	Bottom BandKeeper® Attachment Plate
26	530-073	Screw
27	510-260	O-ring
28	510-010	O-ring

Location #	Part #	Description
29	520-128	Face Port, KMB 28
30	560-070	Port Retainer
31	530-052	Screw, Port Plug
32	530-073	Screw
33	540-179	Top BandKeeper® Attachment Plate
34	540-171	Top BandKeeper® Mount
35	530-035	Screw
36	550-062	Knob, Nose Block
37	555-180	Packing Nut, Nose Block
38	510-008	O-ring
39	550-116	Nose Block Guide
40	530-045	Screw
41	540-015	Kidney Plate
42	550-061	Spacer
43	510-787	Port Whisker Wing
44	530-008	Screw
45	520-042	Tie Wrap
46	510-761	Tri-Valve Exhaust Main Body
47	520-200	Whisker Exhaust Valve Insert
48	510-776	Exhaust Valve
49	530-009	Brass Nut
50	520-118	Tri/Quad Valve Whisker Clamp
51	510-786	Starboard Whisker Wing
52	525-752	Tri-Valve Exhaust
53	505-069	SuperFlow® 350 Regulator Assembly
54	530-021	Screw
55	545-041	Cover, Water Dump, KMB 28
56	510-561	Valve, Water Dump, Black
57	510-012	O-ring
58	555-154	Bent Tube, No O-rings
59	520-033	O-ring, Teflon®

Location #	Part #	Description
60	555-155	Bent Tube Assembly w/O-rings
61	505-024	Side Block Assembly (B)
62	530-308	Hex Nut
63	530-525	Washer
64	515-035	Communications Post
65	550-040	Nut
66	550-043	Plug
67	510-481	O-ring
68	515-061	Terminal Block
69	550-040	Nut
70	505-047	W.P. Connector Assembly
71	515-029	Microphone
72	515-018	Earphone, Right, 9"
73	515-019	Earphone, Left, 15.5"
74	515-033	Communications Set

* As of September 2004, all KMB 28Bs are manufactured with the large tube SuperFlow 350 Regulators, part number 505-069, and a new frame part number 520-125. The large tube regulator cannot be retrofitted into pre September '04 KMB 28s without the purchase of a new frame. Small tube KMB 28 frames, Part number 520-096, are available as replacement parts (see location #14).

⚠ CAUTION

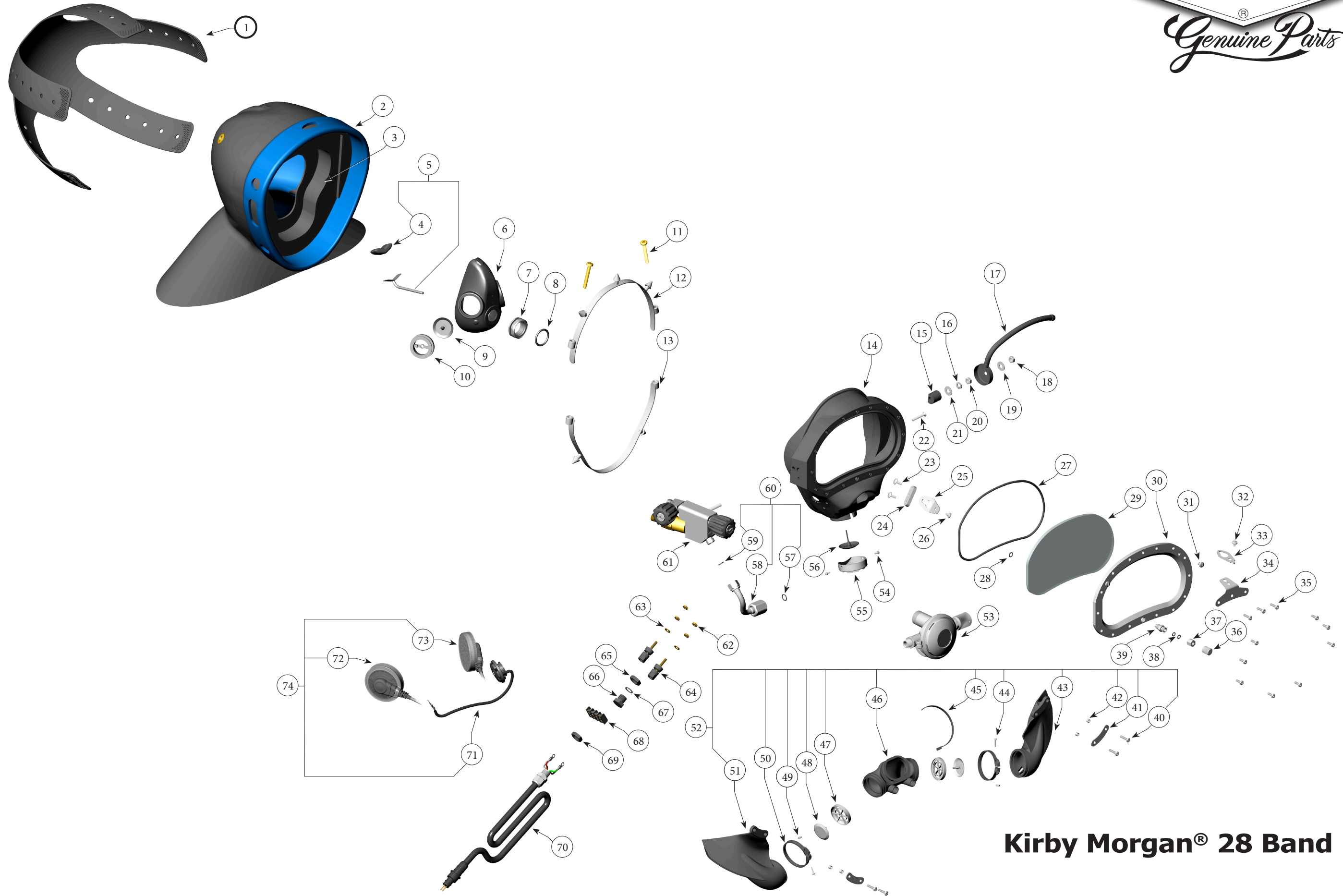
Use only Kirby Morgan original replacement parts. The use of other manufacturers' parts will interfere with the performance characteristics of your life support equipment and may jeopardize your safety. Additionally, any substitutions will void any warranties offered by KMDSI. When ordering spares, always insist on Kirby Morgan original parts.



Kirby Morgan Dive Systems, Inc.® 1430 Jason Way, Santa Maria, CA 93455

Phone: 805/928-7772 Fax: 805/928-0342

www.KirbyMorgan.com e-mail: kmdsi@KirbyMorgan.com



Kirby Morgan[®] 28 Band Mask[®]